

DIAGNOSTICS, TELEMATICS & TOOLS

jaltest TOOLS

CATALOGUE



jaltest
BY COJALI

Index

04

Jaltest Tools

16

Electronic equipment

06

Jaltest ADAS Calibration Equipment

18

Special repair tool

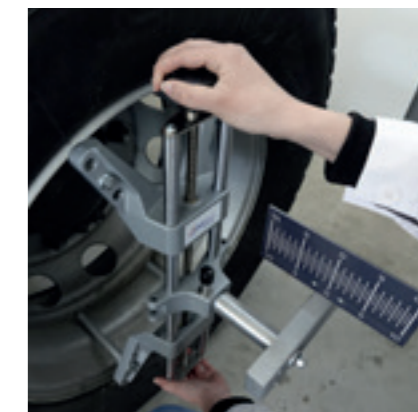
10

Electronic simulation benches

24

Cojali

JALTEST TOOLS.
TOOLS AND SOLUTIONS FOR A COMPLETE
AND PROFESSIONAL SERVICE





— Jaltest Tools

The new Jaltest Tools product range is designed to supply the workshop with high-quality professional equipment, consistent with the current digital technology of commercial vehicles.

Together with Jaltest, the leading multibrand diagnostic tool, it provides new business opportunities and an easy and guarantee service for the final customer.

Esta unión facilitará las tareas más avanzadas de diagnóstico y mantenimiento del vehículo, de forma sencilla e intuitiva, no sólo a nivel de software sino a nivel de tareas manuales y de comprobación.

1. ADAS calibration equipment
2. Electronic simulation bench
3. Electronic equipment
4. Special repair tool

— Jaltest ADAS Calibration Equipment

The ADAS safety systems are advanced systems for driver support are increasingly present in new vehicles. Among other functions, they are responsible for managing adaptive cruise control, object detection or lane departure.

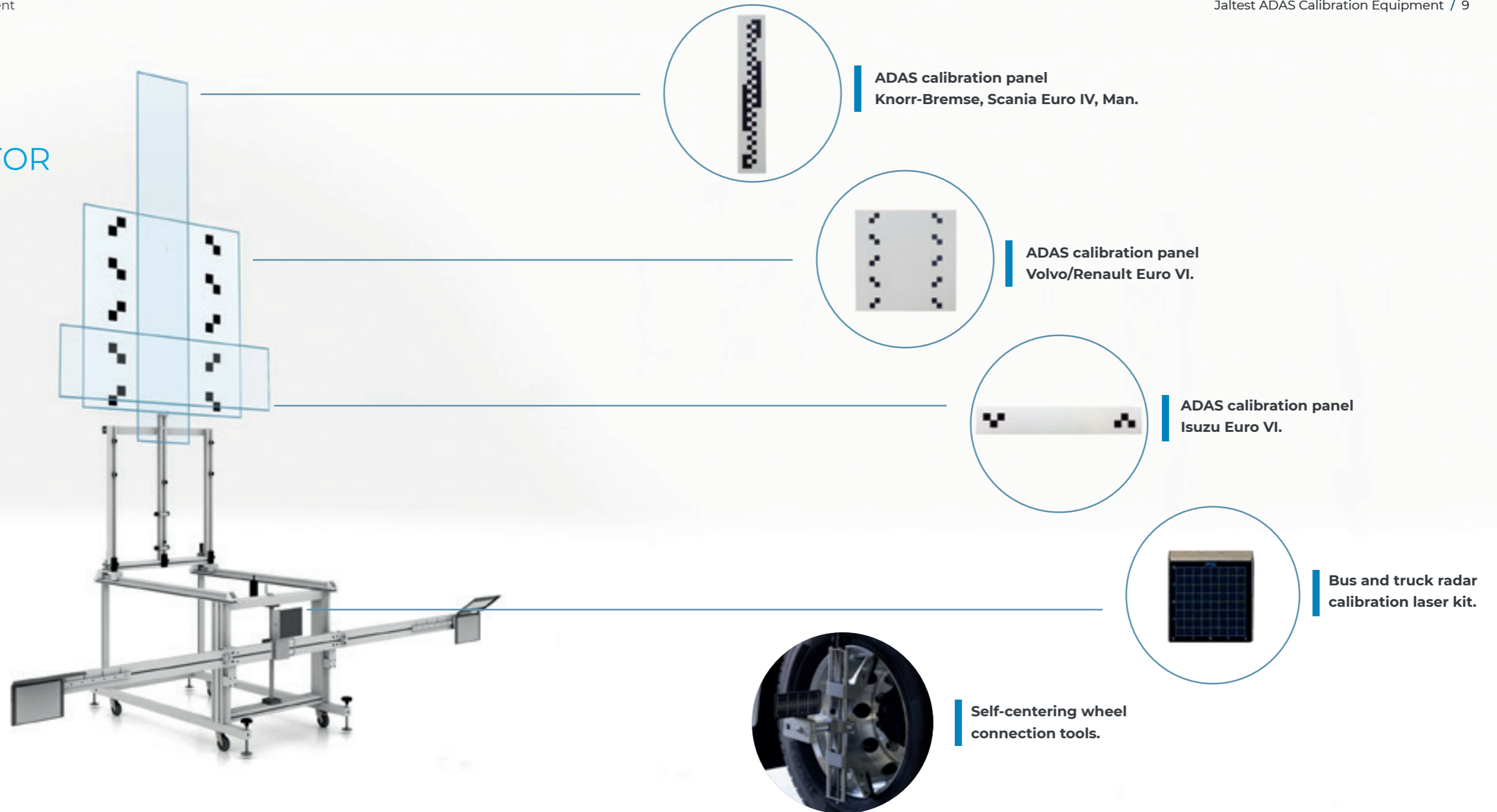
Often, these systems must be reset after accidents; wiper renewal, control unit replacement, vehicle chassis adjustment, inappropriate behaviours, etc.

In order to meet the challenges that this entails, Jaltest Tools range launches on the market, in a pioneer manner, the equipment and accessories necessary for the correct ADAS calibration systems presents in commercial vehicles, always accompanied by detailed information for its installation and operation.

For its proper operation, it will only be necessary to follow the assembly instructions of the following elements:



THE PIONEER TOOL OF ADAS CALIBRATION FOR COMMERCIAL VEHICLES



ADAS panel support frame.

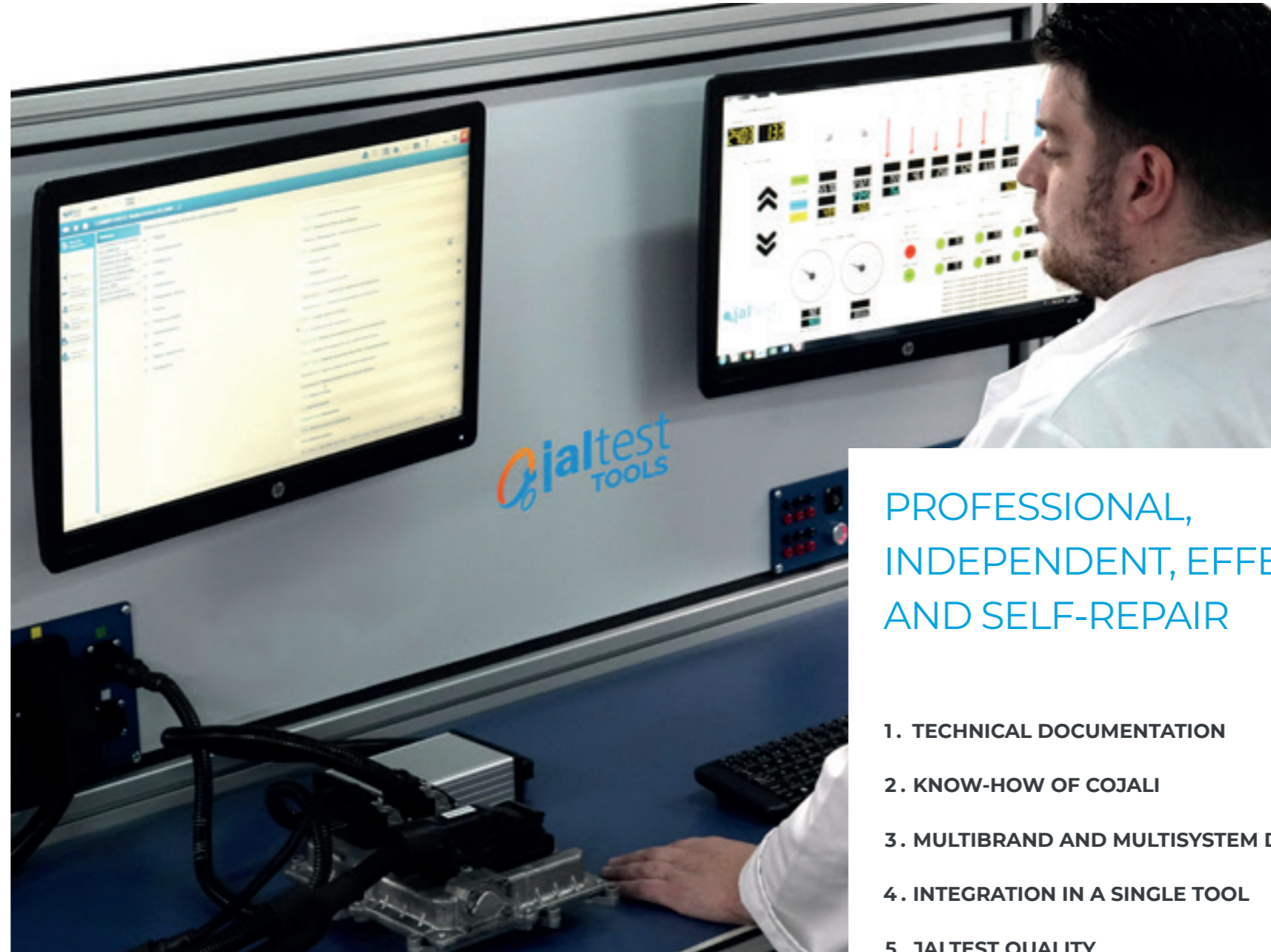
— Electronic simulation benches

ESB (Electronic Simulation Bench)

With Jaltest ESB, it is possible to verify the correct operation of electronic control units of commercial vehicles, simulate all input signals and read the output signals, and perform diagnosis of the ECU simultaneously. Also, it has documentation specific to repair different faults in electronic control units and check guidelines to verify the correct operation of the ECU.

Jaltest ESB simulation equipment will make possible the diagnosis, repair and test of electronic control units for commercial vehicles by:

1. Simulation of ECUs input signals.
2. Reading of output signals.
3. Access to repair documentation.
4. Access to check guidelines..



PROFESSIONAL,
INDEPENDENT, EFFECTIVE
AND SELF-REPAIR

1. TECHNICAL DOCUMENTATION

2. KNOW-HOW OF COJALI

3. MULTIBRAND AND MULTISYSTEM DIAGNOSIS

4. INTEGRATION IN A SINGLE TOOL

5. JALTEST QUALITY

JALTEST ETM.

Jaltest ETM (Electronic Test Module) is an additional module to Jaltest software which is used to isolate and verify electronic modules and different sensors installed in commercial vehicles, in order to:

- Avoid wrong diagnosis and the replacement of components due to problems with the wiring or the control unit itself.
- Perform accurate and advanced diagnosis of the complete integrity of the EBS modulators.
- Perform an End of Line (EOL) test to ensure the correct operation of the components.
- Provide coverage in the most important suppliers of EBS modulators; Knorr-Bremse and Wabco, as well as in their different generations.

Types of modules and sensors subject of verification:

1. EBS modulators.
2. Trailer control modules.
3. ABS/EBS inductive wheel speed sensors.
4. Brake pad wearing sensors.



SST SIMULATION BENCH.

The speed sensor test or Speed Sensor Tester (SST) is a device that allows you to check the status of both passive and active speed sensors. In addition, it allows you to simulate signals of these types of sensors to verify the behaviour of the control unit.

In case of failure or malfunction, the Speed Sensor Tester (SST) allows you to quickly detect if the damaged component correspond to the speed sensor, by contrast, correspond to the control unit, which does not process the signal correctly. Also, it allows you to know if the problem is related to the power supply, short circuit or open circuit. In this way, it is possible to avoid other laborious and complex tests.



PTE SIMULATION BENCH.

Jaltest PTE (Portable Trailer e-Supply) is a portable device whose main objective is the verification of electrical signals of lighting and communication that are transferred from the tractor head to the trailer, such as lights, turn signals and CAN communication.



It has two operation modes to contemplate different types of vehicles depending on where the verification is required, tractor head or trailer, this latter without the need of any other source of external power supply and in turn allowing the possibility to diagnosis the brake module using Jaltest diagnostic tool.

Through the lighting of LED devices, Jaltest PTE shows the status of each signal by offering a fast and secure check.

It is a product designed to offer a warranty service, reducing significantly the time spent on checks and fault detection.



— Electronic equipment

Jaltest Tools, based on its great experience in workshop diagnostic equipment, has developed a wide variety of instruments to be used in a complementary and frequently manner in order to perform diagnosis and any subsequent action on the vehicle correctly.

MULTIMETER

Portable electric instrument used to directly measure active electrical values such as currents and voltages; or passive such as resistances.



TENSIOMETER

Instrument to measure the voltage and continuity in a circuit.



TACHOMETER

Instrument used to measure the speed (rpm) of a component, for example, a fan. Most of tachographs also have a counter.



AMMETER

Ammeter that allows you to measure without the need of opening the circuit to be measured. Its operation is based on the measure of the current from the magnetic field that it generates. It has a sensor, in the form of clip, that opens and clamps the wire to be measured.



TEMPERATURE GAUGE

Instrument to measure the temperature at a distance, collecting the radiation of the measuring point.



— Special repair tools

Specific equipment necessary for operations of maintenance and repair in essential component of the vehicle, such as gearbox or engine.



ENGINE TOOLS



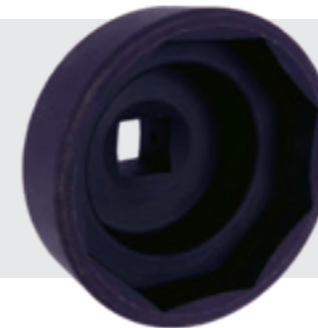
Specific tool necessary for the correct development of tasks in the engine block and other related peripheral components. They are engine rotation tools, tools for positioning, kit for replacing injectors sleeves, seals, keys for oil filters, etc.

GEARBOX TOOLS

Specific tool necessary for certain tasks of maintenance and repair of the gearbox and its components. For example, assembly and disassembly kit, clutch wearing checking tools, seal replacement tools, etc.



AXLES AND DIFFERENTIAL BRIDGE TOOLS



Specific tool necessary for operations on different types of axles and differentials of both truck and trailer, such as axle bushing nut wrenches.

BENEFITS FOR WORKSHOP

1. QUALITY ASSURANCE

All the tools of Jaltest Tools have been developed by the specialized engineering team of Cojali, adapting to the specific needs of more than 25.000 of its customers. In addition, they have been deeply tested to ensure their optimal performance.

2. COMPATIBILITY WITH JALTEST DEVICES

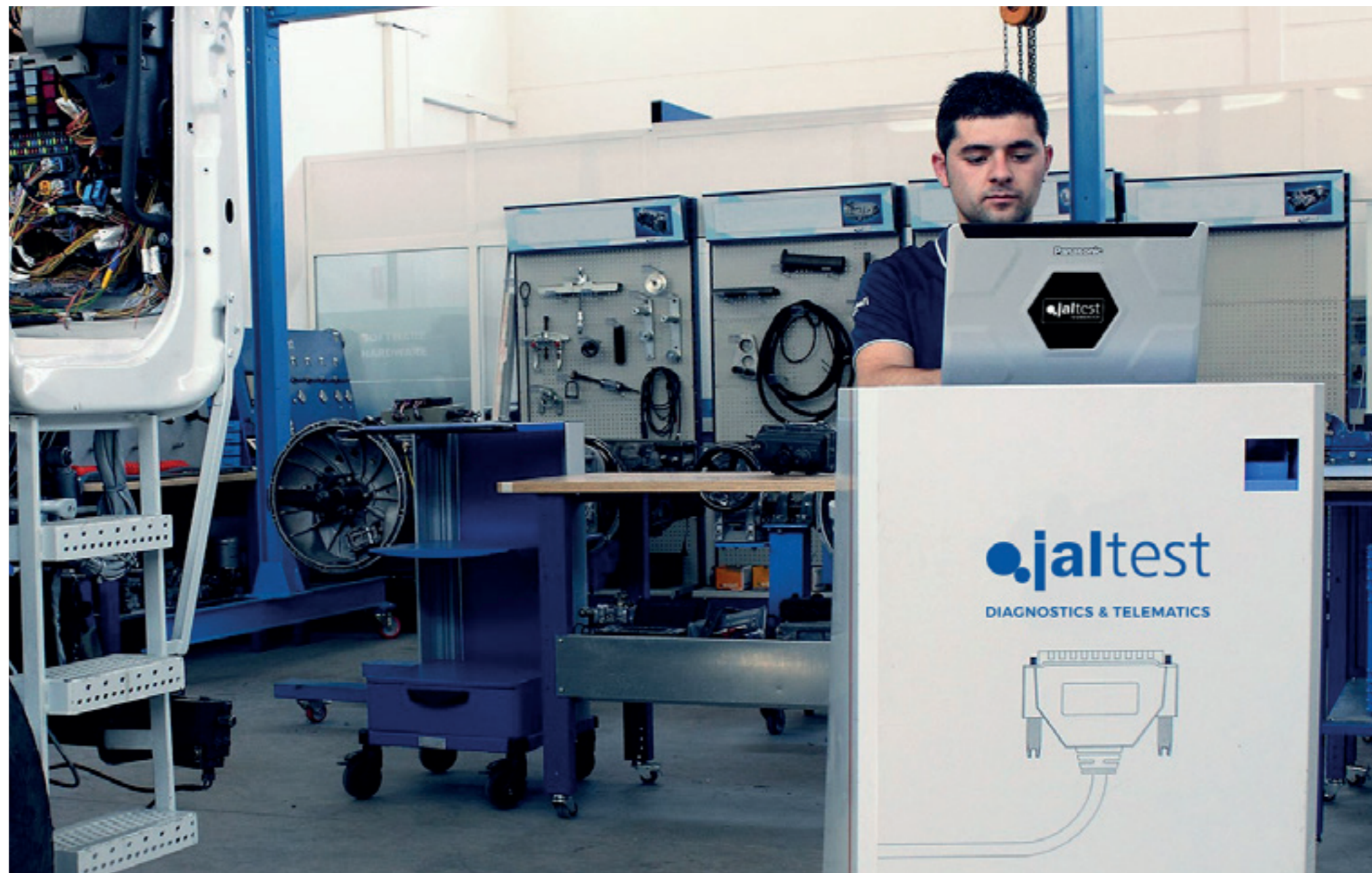
Jaltest Tools ensures the comfort of having the same and compatible devices from the same supplier, facilitating the repair, recalibrated and maintenance processes regardless of model and brand of the vehicle.

3. MODERNIZATION AND PROFESSIONALISM

Cojali is aware of the constant evolution of the sector and the added value that entails the most advanced techniques for the workshop. These techniques allow it to address the new incidents present in the vehicle whose electronic systems are increasingly advanced.

4. SAVINGS IN REPAIR TIMES

Having precise and easy to use tools guarantees the quick action and cost savings in labour, allowing the workshop to deal with a higher number of vehicles more efficiently and in the shortest time of period.





— Cojali

Cojali is a Spanish multinational company and a leading manufacturer of cooling systems, brake systems, electronic components, multibrand diagnostics and telematics for commercial vehicles, agricultural vehicles, construction machinery and marine vessels.

Established in 1991, Cojali focuses on investigation, development and innovation for commercial vehicles in the independent market, offering a quality equal to the original equipment.

Cojali is the industry leading manufacturer of fans and viscous fan clutches for all types of commercial vehicles, agricultural and OHW and construction equipment. Our catalogue offers a wide range of brands on the European, Asian and North American markets.



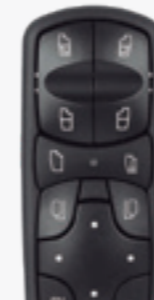
COOLING SYSTEMS

Cojali manufactures one of the widest braking systems range for commercial and agricultural vehicles, among which are mechanical, pneumatic and electronic systems, such as servo clutches, actuators and other types of valves.



BRAKE SYSTEMS

The constant growth of our R+D+I Department allows Cojali to continue to invest on the development of this type of products, where electronics makes up a large part of the components for agricultural and commercial vehicles.



ELECTRONIC COMPONENTS

The reconditioning of elements with electronic control is subject to strict quality controls. It is a complex and thorough process, since the part replaces all its components susceptible to wear by new ones. Also, it renews the electronic part and the subsequent reprogramming or parameter setting, depending on the case.



RECONDITIONED PRODUCTS



JALTEST DIAGNOSTICS

Jaltest is a multibrand and multisystem diagnostics tool developed to perform the most advanced vehicle diagnostics and maintenance tasks in an easy and intuitive way, not only by reading error codes, but also by providing troubleshooting guides.

Jaltest after-sales support is focused on delivering professional services to the workshop through:

- Technical Assistance.
- Training & e-Learning.
- Specialized Customer Support.

Jaltest offers coverage for commercial vehicles, agricultural vehicles, construction machinery and marine vessels.



COMMERCIAL



AGRICULTURAL



OFF-HIGHWAY



VESSELS

JALTEST ISOBUS CONTROL

Jaltest ISOBUS CONTROL offers connectivity solutions between implement and tractor for all types of implements. This solution introduces the digitization of agricultural production processes, in order to manage the resources efficiently and enable the precision agriculture to be more accessible and easier to implement.

Based on ISOBUS technology (ISO 11783), this solution has as its main objectives the following:

1. Ensure full compatibility between tractor and implement regardless of the manufacturer.
2. Automation of agricultural processes.
3. Optimization of times, resources and machines.
4. Maximization of agricultural production and cost reduction.
5. Acquisition of efficient data to help in the decision-making and in future campaign planning.
6. Real time control of crops and agricultural machines.

Jaltest ISOBUS CONTROL is a flexible and functional solution, which helps to achieve maximum performance of agricultural machinery to manage successfully and comfortably a productive and efficient business, adapted to new technologies.



i-Parts ASSIST

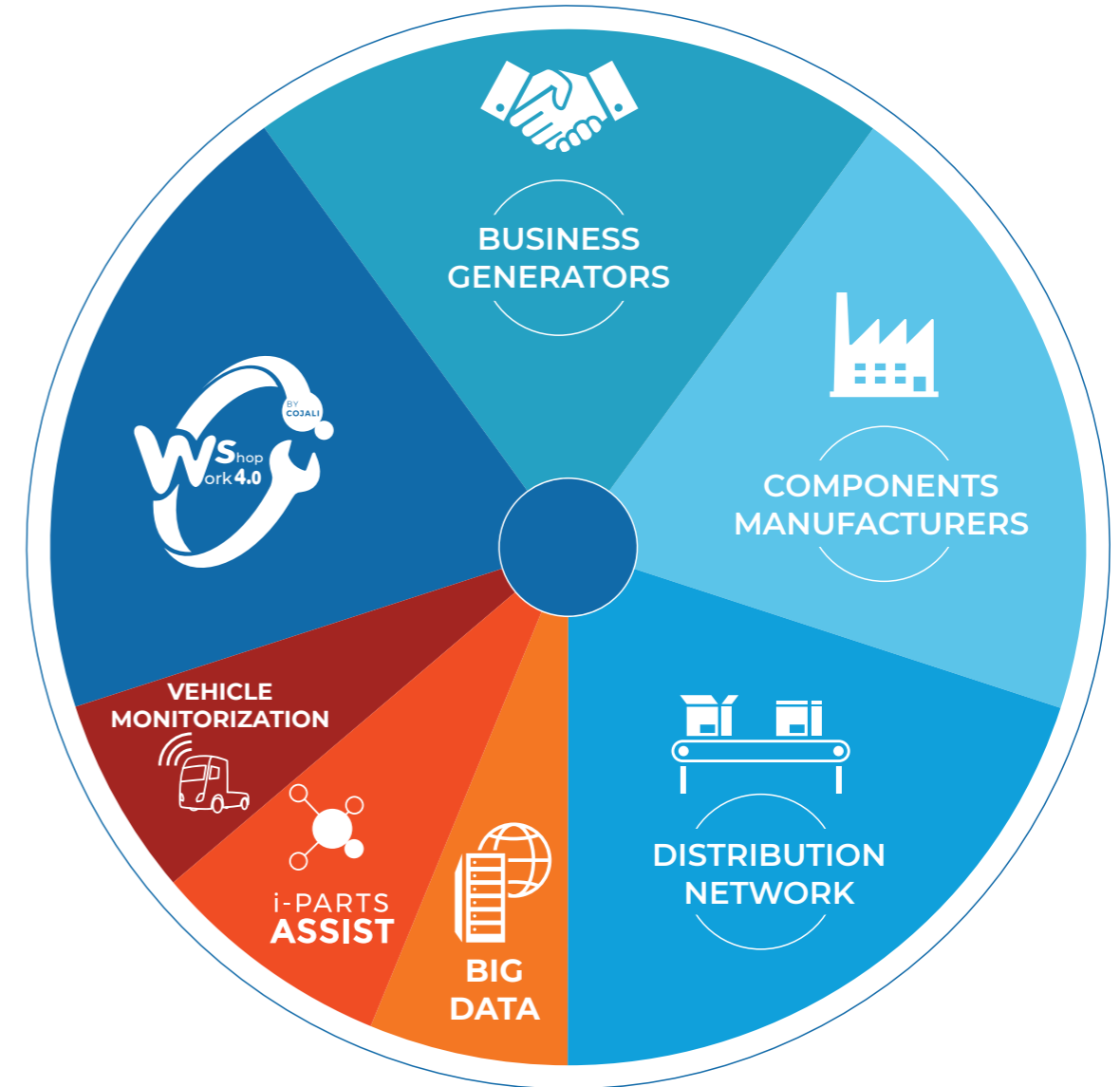
i-PARTS Assist is the latest Parts Support Program of Cojali aimed towards the workshop. Through a series of guides and video tutorials, the workshop is capable of easily carrying out the installation of components that may require reprogramming or the use of diagnostics tools.



WORKSHOP 4.0

Solutions and services that connect workshops, fleets and parts distributors in order to perform a predictive maintenance and a professional, fast and efficient repair, by using Jaltest diagnostics tools, Cloud Diagnostics and the latest generation components for commercial vehicles.

Workshop 4.0. is distinguished by offering Training services, Vehicle Fix support, Consulting and Support for the installation and reprogramming of components (i-PARTS ASSIST).



JALTEST TELEMATICS

TELEMATICS, CLOUD DIAGNOSTICS AND FLEET MANAGEMENT, A SOLUTION FOR EVERYTHING

Jaltest Telematics defines a new concept in the market that improves any current solution by adding Remote Diagnostics and technical information obtained directly from the vehicles. Jaltest Telematics is aimed towards the optimization of fleet efficiency, by reducing the number of breakdowns, measuring the main indicators to support the decision-making process, and providing the necessary information to the users in each role.

1. Cloud Diagnostics.
2. Real time fleet health check.
3. Breakdown time reduction.
4. ROI optimization.
5. Proactive workshop.



📍 LOCATION:

- Current position.
- History.
- Nearest vehicle.
- My places.

🕒 ALARMS:

- Location.
- Distance travelled.
- Time intervals.
- Overspeeding.
- Cold chain.
- Diagnosis.
- Pending tachograph/driver card downloads.

✉️ MESSAGES.

🔍 REMOTE DIAGNOSIS:

- Present errors.
- Reading of out-of-range indicators.
- Real-time notifications (SMS and e-mails).
- Next maintenances.
- Fleet health check.
- Error clearance. ej. Anti-pollution system.

📡 SENSORING:

- Door opening and closing.
- Temperature.
- Humidity.
- Pressure.
- Customized solutions depending on the type of business.

📄 REPORTS:

- Times, Speeds, RPM.
- Trip chart.
- Trip diagram.
- Consumption.
- Brake actuations.
- Driver ranking.
- Parameter reading and trailer data.
- Inertia usage.
- Inputs or sensors installed.
- Use of cruise control.
- Doors opening and closing.

🕒 TACHOGRAPH:

- Remote tachograph download.
- Remote download of driver cards, driving times and rest times.

🔧 WORKSHOP NOTIFICATIONS:

- Repair management.
- Maintenance management.
- Possibility of remote diagnostics.
- Possibility to have a workshop network.

📦 ORDER MANAGEMENT:

- Asset tracking.
- Real-time tracking.
- Chat with the driver.
- History of changes.

🔧 MAINTENANCE:

- Management of maintenance tasks.
- Maintenance log.
- Maintenance management through workshop notifications.
- Maintenance warnings.

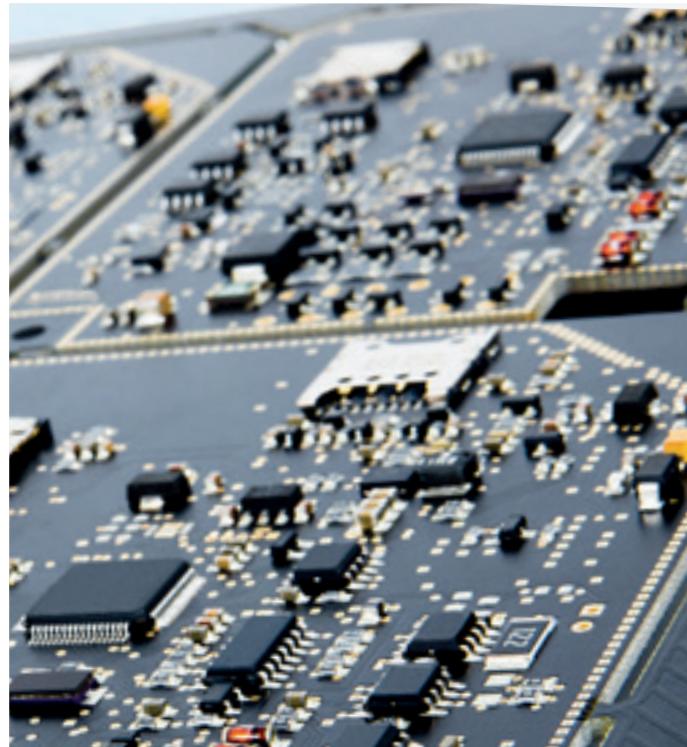
🛢️ FUEL:

- Fuelling recording for drivers and information about actual fuel costs.

COJALI OEM SOLUTIONS

Cojali is not only a manufacturer for the independent aftermarket, but also an OE-level solution provider. Thanks to a vast experience in the manufacturing of high-quality products, industry-leading and independent multibrand diagnostics and new technologies for fleet management, Cojali is a sure bet to provide solutions for leading vehicle and system manufacturers.

CUSTOMISED HARDWARE AND SOFTWARE SOLUTIONS FOR MANUFACTURERS



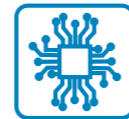
DIAGNOSIS



ISOBUS



TELEMATICS



ENGINEERING

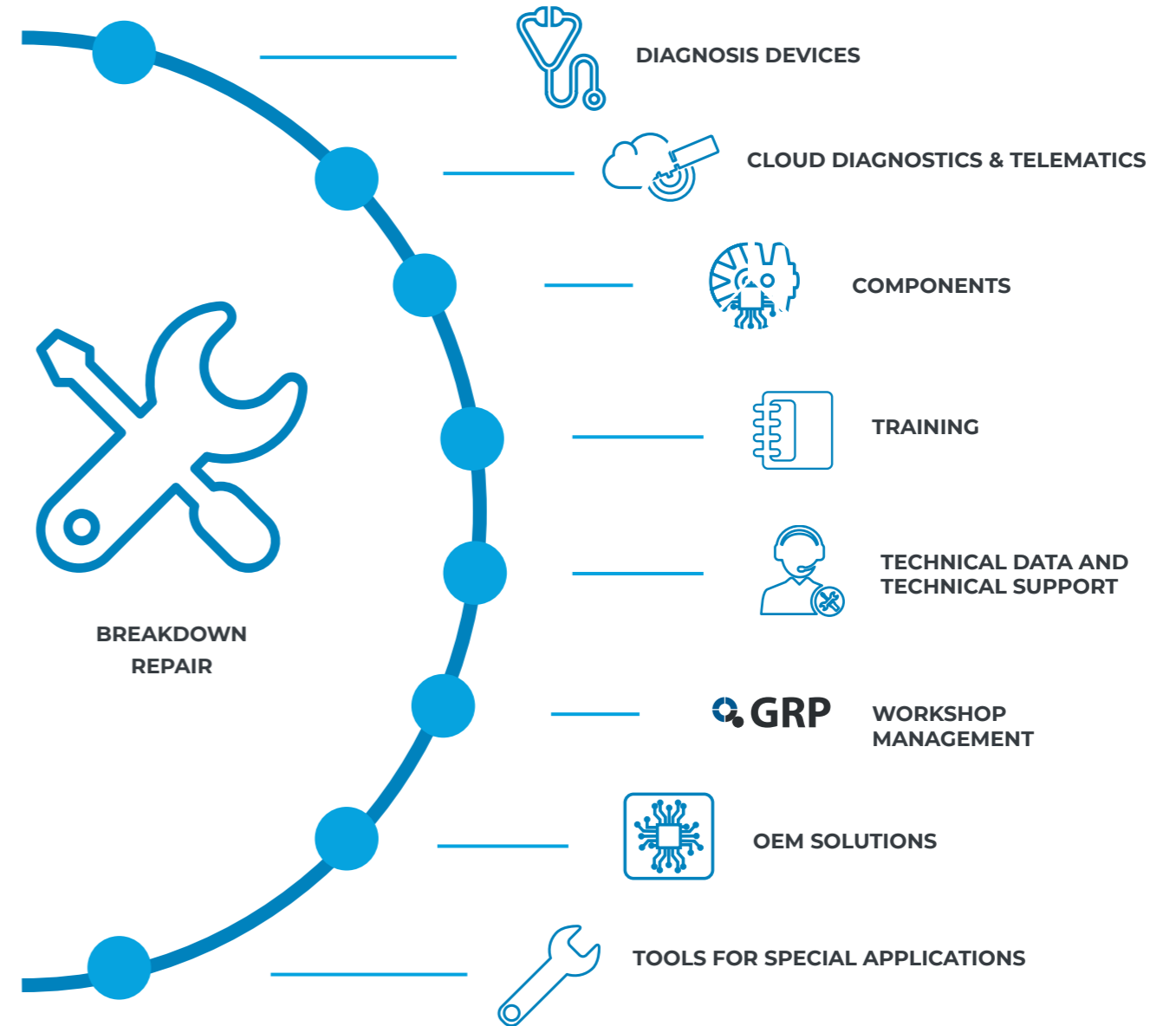


COMPONENTS



BIG DATA

COJALI. WE MEET ALL YOUR BUSINESS NEEDS



— Cofan

Company of Cojali Group, it has more than 28,000 references among which are a multitude of tools for the professional repair sector.

Together with Jaltest, the multibrand and multisystem diagnostic tool, and Jaltest Tools, the new catalogue, they make possible to complete the entire range necessary for the optimal operation of the workshop.



MANUAL TOOLS



ELECTRICAL TOOLS



PNEUMATIC TOOLS



LUBRICATION AND AUTOMOTIVE





HEAD OFFICE

COJALI S.L. Avenida de la Industria, 3 · 13610 · Campo de Criptana · España
Tel. National: +34 926 589 670 · cojali@cojali.com
Tel. International: +34 926 589 671 · export@cojali.com

NORTH AMERICA

Cojali USA, Inc. 2200 NW 102nd Avenue #4b · Doral, FL 33172, USA
Tel: (+01) 305 960 7651 · Toll free: 1-800-975-1865 · Mexico: +52-5546312236
customersupport@jaltest.com · info@cojaliusa.com

jaltest.com

cojali.com

jaltest-telematics.com

2019 V.1 EN



Local Distributor